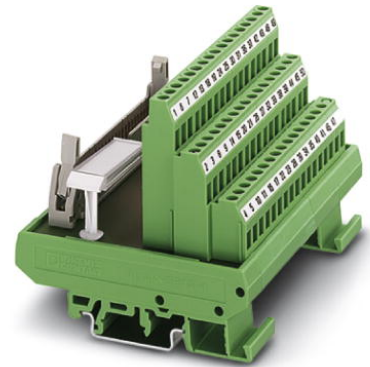


FLKMS 40

Order No.: 2281584

The illustration shows a 50-pos. version

<http://eshop.phoenixcontact.de/phoenix/treeViewClick.do?UID=2281584>

VARIOFACE module, with screw connection and flat-ribbon cable plug connector, for mounting on NS 32 or NS 35/7.5, with pin strip and short and long locking latches for socket strips, 40-pos.

Commercial data	
EAN	4017918054830
Pack	5 Pcs.
Customs tariff	85369010
Weight/Piece	0.21036 KG
Catalog page information	Page 243 (IF-2007)

<http://www.download.phoenixcontact.com>
Please note that the data given here has been taken from the online catalog. For comprehensive information and data, please refer to the user documentation. The General Terms and Conditions of Use apply to Internet downloads.

Technical data	
General data	
Nominal voltage U_N	60 V AC
Max. current carrying capacity per branch	1 A
Number of positions	40
Length	77 mm
Width	79 mm
Height	72 mm
Ambient temperature (operation)	-20 °C ... 50 °C
Ambient temperature (storage/transport)	-20 °C ... 70 °C
Test voltage	500 V (50 Hz, 1 min.)

Mounting position	Any
Standards/regulations	IEC 60664
	DIN EN 50178
	IEC 62103

Connection data

Connection 1	PCB connection
Connection in acc. with standard	IEC / EN
Type of connection	Screw connection
Conductor cross section solid min.	0.2 mm ²
Conductor cross section solid max.	4 mm ²
Conductor cross section stranded min.	0.2 mm ²
Conductor cross section stranded max.	2.5 mm ²
Conductor cross section AWG/kcmil min.	24
Conductor cross section AWG/kcmil max	12
Stripping length	8 mm
Screw thread	M 3
Connection 2	Flat-ribbon cable connection
Number of connections	1
Type of connection	Flat-ribbon cable plug connector in acc. with IEC 60603-13
Number of positions	40

Certificates / Approvals

Approval logo

**requested approbations**

Certification	GOST
---------------	------

Accessories

Item	Designation	Description
Cable/conductor		
2288985	FLK 40/EZ-DR/ 50/KONFEK	Round cable sets, with two 40-pos. socket strips (1:1 connection), also for use with Siemens SIMATIC® S5-95U and 100U (32 x digital IN/OUT), cable length: 0.5 m
2288998	FLK 40/EZ-DR/ 100/KONFEK	Round cable sets, with two 40-pos. socket strips (1:1 connection), also for use with Siemens SIMATIC® S5-95U and 100U (32 x digital IN/OUT), cable length: 1 m
2289007	FLK 40/EZ-DR/ 150/KONFEK	Round cable sets, with two 40-pos. socket strips (1:1 connection), also for use with Siemens SIMATIC® S5-95U and 100U (32 x digital IN/OUT), cable length: 1.5 m
2289010	FLK 40/EZ-DR/ 200/KONFEK	Round cable sets, with two 40-pos. socket strips (1:1 connection), also for use with Siemens SIMATIC® S5-95U and 100U (32 x digital IN/OUT), cable length: 2 m
2289023	FLK 40/EZ-DR/ 250/KONFEK	Round cable sets, with two 40-pos. socket strips (1:1 connection), also for use with Siemens SIMATIC® S5-95U and 100U (32 x digital IN/OUT), cable length: 2.5 m
2289036	FLK 40/EZ-DR/ 300/KONFEK	Round cable sets, with two 40-pos. socket strips (1:1 connection), also for use with Siemens SIMATIC® S5-95U and 100U (32 x digital IN/OUT), cable length: 3 m
2289049	FLK 40/EZ-DR/ 350/KONFEK	Round cable sets, with two 40-pos. socket strips (1:1 connection), also for use with Siemens SIMATIC® S5-95U and 100U (32 x digital IN/OUT), cable length: 3.5 m
2289052	FLK 40/EZ-DR/ 400/KONFEK	Round cable sets, with two 40-pos. socket strips (1:1 connection), also for use with Siemens SIMATIC® S5-95U and 100U (32 x digital IN/OUT), cable length: 4 m
2299589	FLK 40/EZ-DR/ 600/KONFEK	Round cable sets, with two 40-pos. socket strips (1:1 connection), also for use with Siemens SIMATIC® S5-95U and 100U (32 x digital IN/OUT), cable length: 6 m
2299592	FLK 40/EZ-DR/ 800/KONFEK	Round cable sets, with two 40-pos. socket strips (1:1 connection), also for use with Siemens SIMATIC® S5-95U and 100U (32 x digital IN/OUT), cable length: 8 m
2299602	FLK 40/EZ-DR/1000/KONFEK	Round cable sets, with two 40-pos. socket strips (1:1 connection), also for use with Siemens SIMATIC® S5-95U and 100U (32 x digital IN/OUT), cable length: 10 m
2295059	FLK EZ-DR.../.../...	Round cable, with preassembly, not shielded, variable cable length